



Innovation
that excites

2014 **ALTIMA[®] SEDAN**

WELCOME TO THE 2014 NISSAN ALTIMA[®] SEDAN DIGITAL BROCHURE

Full of images, feature stories, and all the specification and trim level information you need to help select your Altima[®] Sedan.

[Click here](#) to sign up for news and updates on the 2014 Nissan Altima[®] Sedan.





WOULDN'T IT BE COOL IF_
YOUR DRIVE WAS THE
BEST PART OF YOUR DAY?

What if just taking an on-ramp gave you an adrenaline rush? Or if you could know you're free and clear before you change lanes. What if the design of your seat made long trips feel less so. And your customized radio station came along for the ride. What about getting a thumbs-up from the valet as you pulled away from the curb? Now it's all possible. The 2014 Nissan Altima®. Change the way you drive forever.

Click the button to see a short video on some of Altima's most innovative features.
Or go to bit.ly/altimavideo

Nissan Altima® Sedan 3.5 SL shown in Pearl White.

**THE FEELING OF STOPPING.
AND LETTING THEM STARE.**

Altima®'s deep creases and dramatic lines started on a designer's sketchpad. Then it took an innovative metal-stamping process to bring them to life. Building something average would have been easier, but on any average day, isn't it nice to have something that takes your breath away?





ZERO-GRAVITY SEATS FOR COMFORT THAT'S OUT OF THIS WORLD.

Whether you're on a cross-country road-trip or braving the daily commute, sitting in a car for too long can be fatiguing. To help you out, Nissan engineers looked to the cosmos where astronauts float weightlessly in zero-gravity conditions.

Zero-gravity Seats – In the weightlessness of space, humans tend to take a relaxed posture that minimizes stress on the body. To recreate this “neutral posture” when you're behind the wheel, Nissan designed an articulated front seat that offers continuous support from the pelvis to the chest, along with seat cushions that flex in response to your unique pressure points. The result is a seat that's amazingly comfortable and helps reduce fatigue, no spacesuit required.

Nissan Altima® Sedan 3.5 SL shown in Beige Leather with optional equipment.



Welcome to Altima®. It's been waiting for you. That's because Altima's available Remote Engine Start System lets you warm up or cool down the cabin from up to 195 feet away.¹ Now when you open the car door, it's as if Altima® was expecting you. And with details like available Dual Zone Automatic Temperature Control, and heated front seats and steering wheel, Altima's interior makes you want to stay. Ready? Just press the Push Button Ignition, and you're on your way.



Click the button to see a short video on Altima's Remote Engine Start System. Or go to bit.ly/altimaremotestart



Nissan Altima® Sedan 3.5 SL shown in Charcoal Leather with optional equipment.

NISSAN ADVANCED DRIVE-ASSIST® DISPLAY INNOVATION THAT'S RIGHT IN FRONT OF YOU.

Traffic jams. Soy chai lattes. Dinner plans. With so much going on around you, it's easy to lose sight of what's most important: driving. From turn-by-turn directions to caller ID,¹ the Advanced Drive-Assist® Display serves up info right in front of you – helping to minimize time looking away.² Plus, its intuitive 3-D depth and tilt design helps you take it all in quicker. So you can focus on what really matters.

Click the button to see a short video on Altima's Advanced Drive-Assist® Display. Or go to bit.ly/altimadisplay



TURN-BY-TURN NAVIGATION^{1,3}



LANE DEPARTURE WARNING^{1,4}



TIRE PRESSURE MONITORING SYSTEM^{1,5}



CALLER ID



¹Information displayed is dependent on how vehicle is equipped. ²Driving is serious business and requires your full attention. Even with Advanced Drive-Assist® Display, only use phone or other communication devices when safe. ³Never program while driving. GPS mapping may not be detailed in all areas or reflect current road regulations. ⁴Lane Departure Warning System operates only when the lane markings are clearly visible on the road. Speed limitations apply. See Owner's Manual for details. ⁵Tire Pressure Monitoring System is not a substitute for regular tire pressure checks.

NISSANCONNECT^{SM1}

INNOVATION YOU'LL FIND INCREDIBLY HANDY.

NissanConnectSM is smart technology that keeps your world within reach. And with NissanConnectSM Apps, your Altima[®] becomes your smartphone's best friend. Music, information and the apps that keep you connected to your world all work seamlessly together through Altima[®]'s audio system. And it keeps on getting better: the app alerts you with updates to the latest version, and the basic app package is free for the first three years.¹

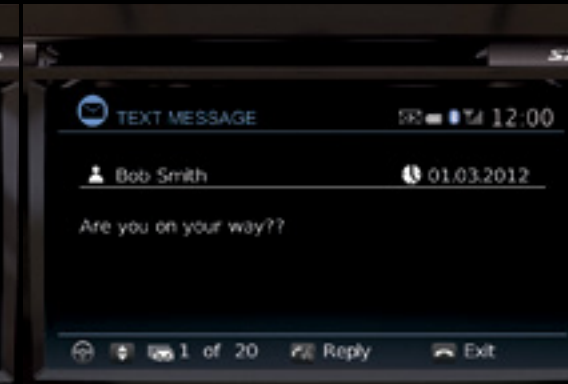
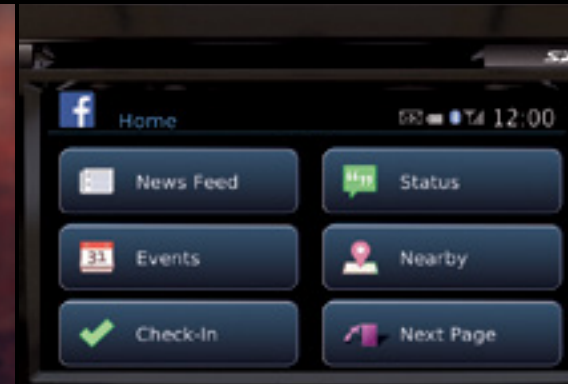
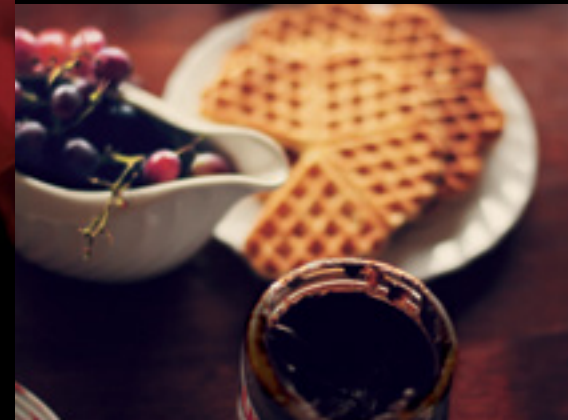
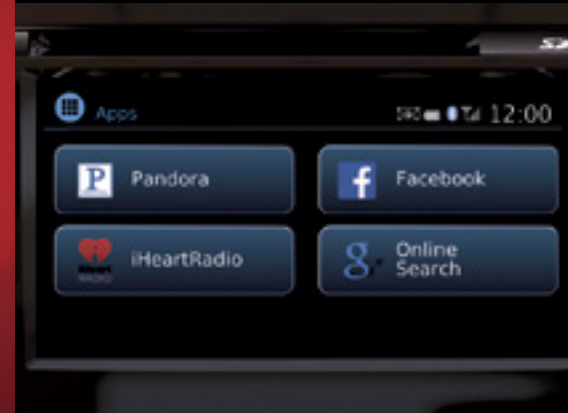
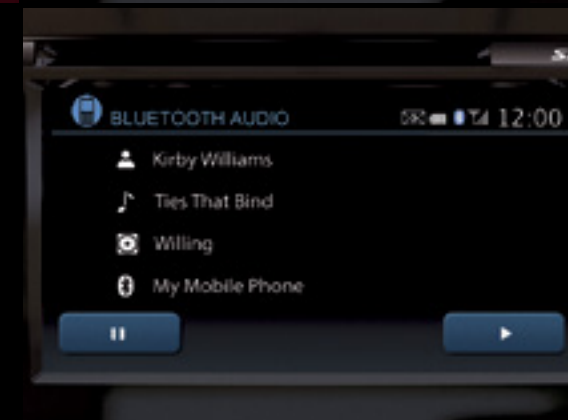
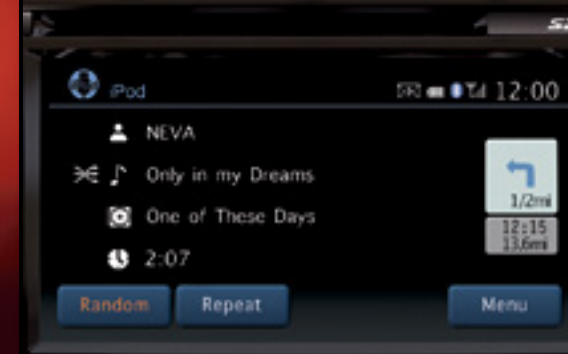
NissanConnectSM Apps: for the music you love! Imagine the choices you have with Pandora[®], iHeartRadio[™], Slacker[®] and more. And it couldn't be easier – download the app, and depending on your type of smartphone, you can stream the music wirelessly via Bluetooth[®] or use Altima[®]'s iPod[®]/USB input.^{2,3} For more information, video demonstrations, smartphone compatibility, FAQs and enrollment assistance, go to www.NissanUSA.com/Connect

NissanConnectSM Apps: everything that matters at your fingertips! You're wired to your world with the NissanConnectSM App. Altima[®] lets you safely keep track of Twitter[®], Facebook[®], and more. And thanks to Altima[®]'s available navigation system and NissanConnectSM's compatibility with location-based services, including Online Search powered by Google[®] and Yelp[®], getting around has never been easier.^{4,5} You can find out more about the app and feature availability at www.NissanUSA.com/connect

More than just apps, NissanConnectSM keeps you in the loop with:

- **Nissan Navigation System – with voice recognition featuring one-shot destination entry; SiriusXM Traffic and Travel Link^{4,5}**
- **iPod[®]/USB input – search for a tune with enhanced voice recognition³**
- **Streaming audio via Bluetooth^{®2}**
- **Hands-free text-messaging assistant^{7,8}**

¹Driving is serious business. Only use NissanConnectSM's services when safe to do so. Subscription Agreement required. Compatible smartphone required. Not all app features are available for all models – check www.NissanUSA.com/connect for details. May require dealer service visit or software upgrade to activate. Never program while driving. GPS mapping may not be detailed in all areas or reflect current road regulations. Cellular network not available in all areas. Cellular network, apps, and services, including Google Services, are provided by independent companies not within Nissan's control. Should provider terminate/restrict service, service may be terminated without notice or liability to Nissan and/or its agents. Nissan not responsible for any equipment or app replacement/upgrades, or associated costs, that may be required for continued operation. Terms and conditions of Subscription Agreement apply. 12-month trial period starts on vehicle sale date; subsequently a paid subscription is required at the then current rate. See retailer for details. Standard text rates and/or data usage may apply. ²Availability of specific features is dependent upon the phone's Bluetooth[®] support. Please refer to your phone Owner's Manual for details. The Bluetooth word mark and logos are owned by Bluetooth SIG, Inc., and any use of such marks by Nissan is under license. ³Driving is serious business and requires your full attention. Do not operate any devices connected to the USB or auxiliary audio input jack while driving. ⁴Never program while driving. GPS mapping may not be detailed in all areas or reflect current road regulations. ⁵Required SiriusXM Satellite Radio, SiriusXM Traffic and Travel Link subscriptions sold separately after trial period. Installation costs, one-time activation fee, other fees and taxes will apply. SiriusXM Traffic available in select markets. Services available only to those 18 or older in the 48 contiguous states and D.C. Fees and programming subject to change. Subscriptions governed by Customer Agreement available at siriusxm.com. ©2013 Sirius XM Radio Inc. Sirius, XM and all related marks and logos are trademarks of Sirius XM Radio Inc. ⁶Points of Interest and/or Send-to-Car may require subscription and owner consent to activate. Certain services, including Google Points of Interest and/or Send to Car, provided by independent companies not within Nissan's control. Should service provider terminate/restrict service, service may be suspended or terminated without notice or liability to Nissan and/or its agents. Nissan not responsible for any equipment replacement or upgrades, or associated costs, that may be required for continued operation due to service changes. ⁷Driving is serious business and requires your full attention. Only use phone or other communication devices when safe. ⁸Use the text messaging feature after stopping your vehicle in a safe location. If you have to use the feature while driving, exercise extreme caution at all times so full attention may be given to vehicle operation. Facebook[®] is a registered trademark of Facebook, Inc. Google[®] is a registered trademark of Google Inc. iHeart Radio[™] is a trademark of Clear Channel Broadcasting Inc. iPod[®] is a registered trademark of Apple, Inc. All rights reserved. iPod not included. Pandora[®] is a registered trademark of Pandora Media. Slacker[®] is a registered trademark of Slacker, Inc. Twitter[®] is a registered trademark of Twitter, Inc.



4-CYLINDER

38

MPG HIGHWAY³

CLASS-LEADING HIGHWAY FUEL ECONOMY.¹

Extensive refinements to Altima's 4-cylinder engine and Continuously Variable Transmission help ensure it's as powerful and fuel-efficient as ever. With class-leading highway fuel economy, you'll enjoy amazingly smooth power delivery as you breeze past the pump.

PUREDRIVE.[™] The 2014 Altima® 2.5 wears the PUREDRIVE[™] badge, meaning it meets or exceeds the industry-average US Federal CAFE standards for model-year 2016. The PUREDRIVE[™] initiative is just one aspect of Nissan's commitment to developing more environmentally friendly transportation for all of us.²



Click the button to see a video on Altima's better than ever Xtronic CVT[®] transmission. Or go to bit.ly/AltimaCVT

4-cylinder Engine. Choose the 182-hp 4-cylinder engine⁴ and get more than just spirited performance. The advanced intake system optimizes the opening of intake valves at high rpm to keep the torque curve flat, giving you smooth power while contributing to the class-leading highway fuel economy.¹

Xtronic CVT[®] (Continuously Variable Transmission). Say goodbye to fixed gear ratios and hello to a new kind of CVT. In the newest version of our CVT, friction is reduced by up to 40% and the ratio coverage is increased to greater than that of some 8-speed automatics. What does that mean behind the wheel? Better acceleration and fuel economy, plus performance so smooth, it's like riding a continuous wave of power.

V6 ENGINE

270

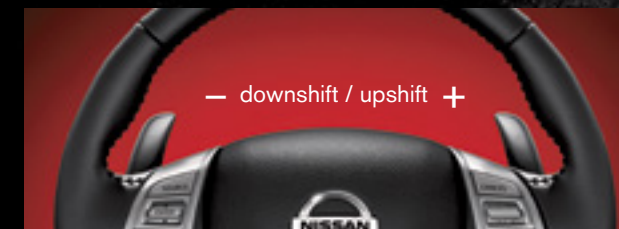
HORSEPOWER

AMAZING ACCELERATION.

What if your daily drive got an adrenaline boost? Altima's V6 engine not only gives you incredible acceleration, but its Xtronic CVT[®] features three modes for a more customized driving experience, including paddle shifters for some Formula 1-style action.

V6 Engine. Nissan's legendary 3.5-liter, 270-hp V6 engine treats you to sports-car like performance and a cool 31 highway MPG³ that keeps you right at home in the carpool lane. Part of the engineering magic is Continuously Variable Valve Timing Control System (CVTCS), which means power is always on tap – off the line, or passing – for a ride as thrilling as it is efficient.

Xtronic CVT[®] with Paddle Shifters. Customize your ride with three modes. Pick Drive for every day, Ds for a sportier "shift" feel, or go hands-on with the paddle shifters. Unique to the V6, the available paddle shifters are mounted right on the steering column, putting precise shifting control at your fingertips. No clutch needed. Just pull a paddle and your "gear" changes on command, giving you an experience that's the best of both worlds.



¹Ward's Upper Middle Sedan Class segment, excluding hybrids and diesels. 2014 EPA Fuel Economy Estimate 38 highway MPG for Altima® 2.5-L with Xtronic CVT. Shares class lead with Mazda 6 automatic transmission. Actual mileage may vary with driving conditions – use for comparison purposes only. ²Adoption criteria based upon US Federal CAFE standards as of July 2011 for MY 2016. Federal standards subject to change by US Government. ³2014 EPA Fuel Economy Estimate. Actual mileage may vary with driving conditions – use for comparison only. ⁴CA emissions (SULEV) equipment causes nominal reductions in horsepower (from 182 hp to 179 hp) and torque (from 180 lb-ft to 177 lb-ft). SULEV vehicles are available in California and some northeastern states.

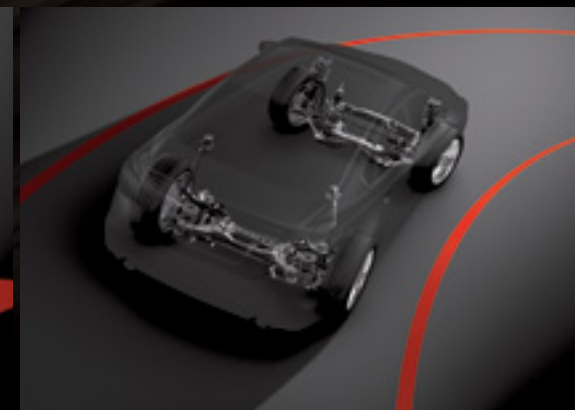


TAKING A CORNER WILL NEVER FEEL THE SAME.

What if your car knew when you were cornering – and how to react to your commands? That's the kind of intuitive response we've engineered into every Altima®. So you can enter a corner with more confidence, and exit with a big grin.



Active Understeer Control. This innovative technology helps improve control when you take a corner. It reads the cornering situation and, if needed, will imperceptibly brake the appropriate wheel to help you steer through the turn.



Suspension. Altima®'s rear multi-link suspension is designed for exceptional agility. You'll feel it especially in the corners, when the layout of the suspension allows the rear wheels to turn slightly to match the front – giving you the sensation of riding on rails.



Shocks. Altima®'s luxury sedan-inspired shocks significantly reduce vibrations for a smooth, flat ride. A rebound spring inside of each shock absorber makes for minimal roughness and more secure cornering, combining great performance with great ride comfort.

NISSAN SAFETY SHIELD® PHILOSOPHY

INNOVATION THAT LOOKS OUT FOR YOU.

Wouldn't it be cool if you had the confidence you need for every part of your drive? The Nissan Safety Shield® technologies are a comprehensive approach to safety that guide the engineering and development of every vehicle we make. By keeping an eye on the vehicle's systems and the surroundings, assisting in handling unexpected situations, and helping to keep you safe in the unfortunate event of an accident, the Nissan Safety Shield® technologies are our way of looking out for you and yours.

MONITOR

Smart technologies are designed to help monitor conditions. Like a warning to let you know you're straying from your lane, or a system that helps ensure you're travelling on properly inflated tires.

Standard Tire Pressure Monitoring System with Easy-Fill Tire Alert^{1,2}

Lets you know when a tire is low. And Easy-Fill Tire Alert takes the guesswork out of filling your tires, with a beep of the horn when you've reached the correct pressure.

Available: Smart Auto Headlights, RearView Monitor,³ Blind Spot Warning,⁴ Lane Departure Warning⁵ and Moving Object Detection⁶

RESPOND

Whether you need to hit the brakes hard or maneuver around an unexpected obstacle, these standard technologies help you respond to a potentially harmful situation.

Vehicle Dynamic Control helps you maintain your steered path.⁷

Traction Control System helps reduce wheelspin in low-traction situations.

Anti-lock Braking System helps you maintain steering control around obstacles while braking heavily.

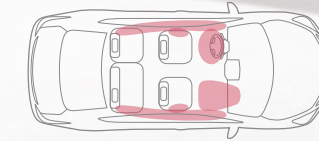
Electronic Brake force Distribution sends extra force to the rear brakes when you have additional weight of passengers or cargo in the back.

Brake Assist helps apply maximum braking force if it detects hard braking and senses you are in an emergency situation.



PROTECT

When a collision is unavoidable, Nissan's Zone Body construction helps absorb the impact while the advanced seat belt and air bag systems help protect passengers.



6 STANDARD AIR BAGS⁸

Nissan Advanced Air Bag System with dual-stage supplemental front air bags with seat belt and occupant-classification sensors⁸

Front seat-mounted side-impact supplemental air bags⁸

Roof-mounted curtain side-impact supplemental air bags⁸

LATCH System (Lower Anchors and Tethers for Children)

snug#kids. Nissan safety engineers have dedicated thousands of hours to evaluating hundreds of child restraints in Nissans. The result: An industry first, The Snug Kids® Child Safety Seat Fit Guide. This guide lists child seats that fit the rear seats of Nissan vehicles, as well as offers invaluable tips on correct installation. Look for the latest Fit Guide at NissanUSA.com/SnugKids.

Click the button to see a short video on how Snug Kids® helps you find the right CRS for your Nissan. Or go to bit.ly/NissanSnugKids

¹Tire Pressure Monitoring System is not a substitute for regular tire pressure checks. ²Vehicle must be on for the Easy-Fill Tire Alert to operate. ³Parking aid/convenience feature. Cannot completely eliminate blind spots or warn of moving objects. May not detect every object. Always check surroundings before moving vehicle. Not a substitute for proper backing procedures. Always turn to check what is behind you before backing up. ⁴The Blind Spot Warning System is not a substitute for proper lane change procedures. The system will not prevent contact with other vehicles or accidents. It may not detect every vehicle or object around you. ⁵Lane Departure Warning System operates only when the lane markings are clearly visible on the road. Speed limitations apply. See Owner's Manual for details. ⁶Moving Object Detection cannot completely eliminate blind spots and may not detect every object. MOD operates at vehicle speeds below 5 mph. Always check surroundings before moving vehicle. Not a substitute for proper backing procedures. Always turn to check what is behind you before backing up. ⁷VDC, which should remain on when driving except when freeing the vehicle from mud or snow, cannot prevent accidents due to abrupt steering, carelessness, or dangerous driving techniques. Always drive safely. ⁸Air bags are only a supplemental restraint system; always wear your seat belt. Even with the occupant-classification sensor, rear-facing child restraints should not be placed in the front-passenger's seat. Also, all children 12 and under should ride in the rear seat properly secured in child restraints, booster seats, or seat belts according to their size. Air bags will only inflate in certain accidents; see your Owner's Manual for more details. Inflated air bags shown for illustration purposes only; actual coverage area may differ. Air bags deflate after deployment.

Click the button to see a short video on Altima®'s Safety Shield technologies. Or go to bit.ly/altimablindspot

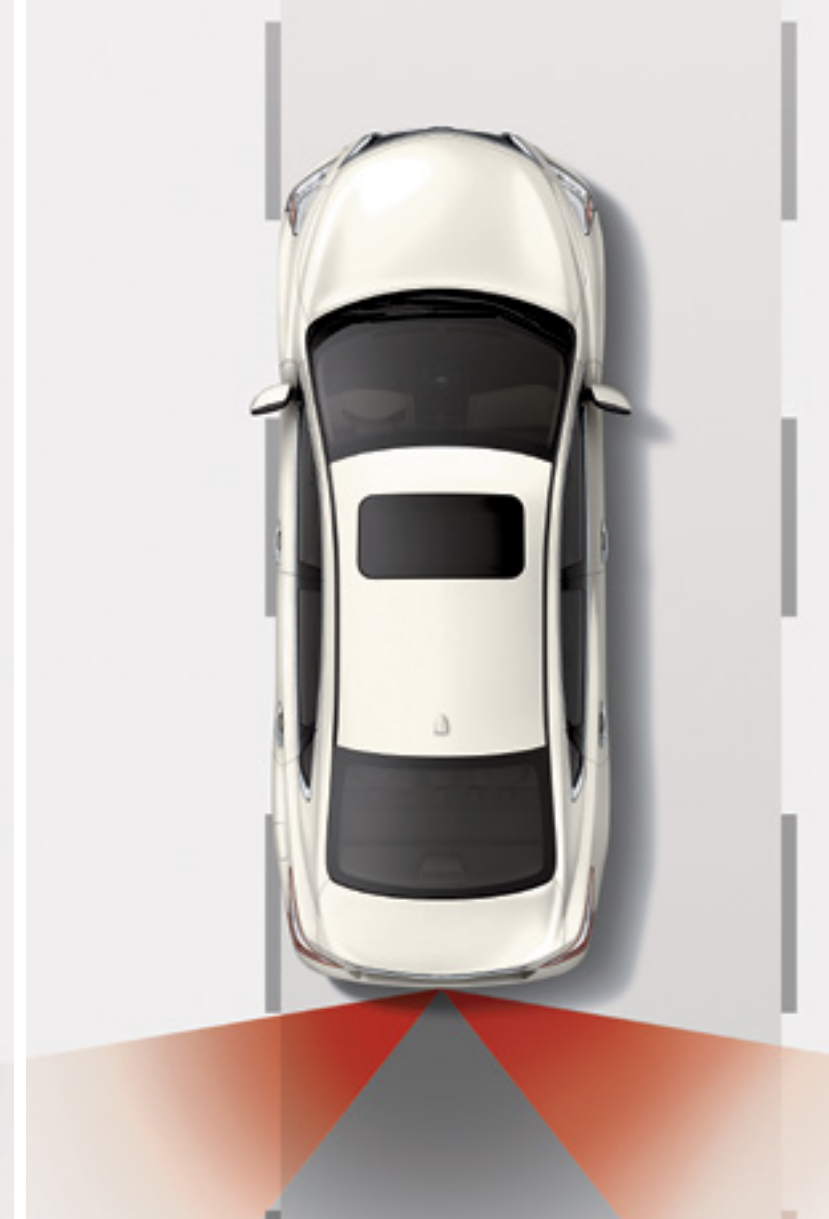
NISSAN SAFETY SHIELD® TECHNOLOGIES

INNOVATION TO HELP DOUBLE CHECK YOUR DOUBLE CHECK.

Wouldn't it be cool if your car had your back? Whether you're changing lanes on the highway or deftly maneuvering your way into a parking spot, Altima®'s available Safety Shield Technologies take advantage of the rearview camera and act as a second set of eyes, giving you a whole new way to double check.



Blind Spot Warning. If another vehicle is detected in your blind spot area, an indicator appears in the driver's or front passenger's doors and on the Advanced Drive-Assist® Display. Put your turn signal on, and the indicator flashes with a warning chime to alert you.¹



Lane Departure Warning. If Altima® detects that you're straying from your lane, the Lane Departure Warning system will give both a visual and audible alert. The system is so smart, it's designed to stop the warnings whenever your turn signal is engaged.²



RearView Monitor with Moving Object Detection. Shift into Reverse, and the available next-generation RearView Monitor displays what's behind you. If it detects something moving by the rear of the vehicle when you're in Reverse, it gives a visual and audible alert. And whenever you want a wider rear view, just push the camera button.^{3,4}

¹The Blind Spot Warning System is not a substitute for proper lane change procedures. The system will not prevent contact with other vehicles or accidents. It may not detect every vehicle or object around you. ²Lane Departure Warning System operates only when the lane markings are clearly visible on the road. Speed limitations apply. See Owner's Manual for details. ³Parking aid/convenience feature. Cannot completely eliminate blind spots or warn of moving objects. May not detect every object. Always check surroundings before moving vehicle. Not a substitute for proper backing procedures. Always turn to check what is behind you before backing up. ⁴Moving Object Detection cannot completely eliminate blind spots and may not detect every object. MOD operates at vehicle speeds below 5 mph. Always check surroundings before moving vehicle. Not a substitute for proper backing procedures. Always turn to check what is behind you before backing up.



GENUINE NISSAN ACCESSORIES.

Every Genuine Nissan Accessory is: custom-fit, custom-designed and durability-tested; backed by Nissan's 3-year/36,000-mile (whichever occurs first) limited warranty; and can be financed when installed by dealer at time of purchase.¹

A. Remote Engine Start System²

It's like having secret powers.

B. Moonroof Wind Deflector

Get your blue sky with less noise.

C. Rear Decklid Spoiler

May the downforce be with you.

D. Trunk Protector³

Use your trunk, don't abuse it.

E. Illuminated Kick Plates

Fewer scuffs and a grand entry, every time.

F. In-mirror RearView Monitor⁴

For a better look at what's directly behind you.

G. Splash Guards and Body Side Moldings

Stay fresh. Stay stylish. (Sold separately.)

H. Interior Accent Lighting

Add a warm glow to the mood.

Additional Accessories:

- 16" Aluminum-alloy Wheels
- Chrome Body Side Moldings
- All-season Floor Mats
- Carpeted Floor Mats
- Carpeted Trunk Mat
- Hideaway Trunk Net
- Clear Rear Bumper Protector
- Fog Lights
- Nose Mask
- Trunk Sub-floor Organizer
- And More

¹Covered by Nissan's Limited Warranty on Genuine Nissan Accessories for the longer of 12 months/12,000 miles (whichever occurs first) or the remaining period under the 3-year/36,000-mile (whichever occurs first) Nissan New Vehicle Limited Warranty. Terms and conditions apply. See Warranty Information Booklet for details. ²State laws may apply; review local laws before using. ³Cargo and load capacity limited by weight and distribution. Always secure all cargo. ⁴Parking aid/convenience feature. Cannot completely eliminate blind spots or warn of moving objects. May not detect every object. Always check surroundings before moving vehicle. Not a substitute for proper backing procedures. Always turn to check what is behind you before backing up.

TURN BRAND-NEW INTO ALL YOU.

Click the button to see short videos on Genuine Nissan Accessories in action. Or go to bit.ly/gnavideos_altima

For more information and to shop online for Genuine Nissan Accessories, go to parts.NissanUSA.com.



Nissan Altima® Sedan 3.5 S shown in Cayenne Red with Fog Lights, Splash Guards, Body Side Moldings, External Ground Lighting and Rear Decklid Spoiler.

CHOOSE YOUR TRIM LEVEL

4-CYLINDER ENGINE

2.5

2.5-liter DOHC 16-valve 4-cylinder engine, Xtronic CVT® (Continuously Variable Transmission), Active Understeer Control, Vehicle Dynamic Control (VDC), Traction Control System (TCS), remote keyless entry with Push Button Ignition, Advanced Drive-Assist® Display, Bluetooth® Hands-free Phone System¹ and streaming audio via Bluetooth® wireless technology,¹ Tire Pressure Monitoring System (TPMS) with Easy-Fill Tire Alert, AM/FM/CD audio system with four speakers, illuminated steering wheel-mounted audio controls, air conditioning, 60/40 split fold-down rear seatbacks, front-passenger seatback pocket, dual chrome exhaust finishers, six air bags



2.5 S

INCLUDES 2.5 EQUIPMENT PLUS:

Nissan Intelligent Key,[®] 6-way power adjustable driver's seat, Tire Pressure Monitoring System (TPMS) with individual tire pressure display and Easy-Fill Tire Alert, AM/FM/CD audio system with six speakers, air conditioning with in-cabin microfilter, Smart Auto Headlights, cruise control with steering wheel-mounted controls, sun visors with illuminated vanity mirrors and extensions, driver's seatback pocket

KEY AVAILABLE PACKAGE: Display Audio Package², Sport Value Package²



2.5 SV

INCLUDES 2.5 S EQUIPMENT PLUS:

17" Aluminum-alloy wheels, Dual Zone Automatic Temperature Control (ATC), Remote Engine Start System, RearView Monitor, upgraded audio system with 5" color display and speed-sensitive volume control, USB connection port for iPod® interface, SiriusXM Satellite Radio,³ NissanConnectSM Apps, hands-free text messaging assistant, diversity antenna, leather-wrapped steering wheel

KEY AVAILABLE PACKAGE: Convenience Package, Navigation Package,⁴ Technology Package²



2.5 SL

INCLUDES 2.5 SV EQUIPMENT PLUS:

Leather-appointed seats, Bose® Premium Audio System with nine speakers, wood-tone trim (Beige interior) and metallic-tone trim (Charcoal interior), heated steering wheel, 8-way power adjustable driver's seat, driver's seat power adjustable lumbar support, heated front seats, LED taillights, manual folding outside mirrors with LED turn signal indicators, heated outside mirrors, fog lights, HomeLink® Universal Transceiver, auto-dimming inside rearview mirror, adjustable rear head restraints, leather-wrapped shift knob, passenger-side front-window one-touch auto-up/down, side cargo net

KEY AVAILABLE PACKAGE: Moonroof Package, Technology Package



V6 ENGINE

3.5 S

INCLUDES 2.5 S EQUIPMENT PLUS:

3.5-liter DOHC 24-valve V6 engine, 18" aluminum-alloy wheels, paddle shifters and manual shift mode, RearView Monitor, upgraded audio system with 5" color display and speed-sensitive volume control, USB connection port for iPod® interface, SiriusXM Satellite Radio,³ NissanConnectSM Apps, hands-free text messaging assistant, diversity antenna



3.5 SV

INCLUDES 3.5 S EQUIPMENT PLUS:

Power sliding glass moonroof, Dual Zone Automatic Temperature Control (ATC) with rear passenger vents, Remote Engine Start System, manual folding outside mirrors with LED turn signal indicators, fog lights, HomeLink® Universal Transceiver, auto-dimming inside rearview mirror, leather-wrapped steering wheel, passenger-side front-window one-touch auto-up/down, side cargo net

KEY AVAILABLE PACKAGES: Navigation Package,⁴ Technology Package²



3.5 SL

INCLUDES 3.5 SV EQUIPMENT PLUS:

Leather-appointed seats, Bose® Premium Audio System with nine speakers, High Intensity Discharge (HID) xenon headlights, wood-tone trim (Beige interior) and metallic-tone trim (Charcoal interior), heated steering wheel, 8-way power adjustable driver's seat, driver's seat power adjustable lumbar support, heated front seats, LED taillights, heated outside mirrors, adjustable rear head restraints, leather-wrapped shift knob

KEY AVAILABLE PACKAGE: Technology Package



¹Availability of specific features is dependent upon the phone's Bluetooth® support. Please refer to your phone Owner's Manual for details. The Bluetooth word mark and logos are owned by Bluetooth SIG, Inc., and any use of such marks by Nissan is under license. ²Late availability. ³Required SiriusXM Satellite Radio, NavTraffic and NavWeather subscriptions sold separately after trial period. Installation costs, one-time activation fee, other fees and taxes will apply. NavTraffic available in select markets. Services available only to those 18 or older in the 48 contiguous states and D.C. Fees and programming subject to change. Subscriptions governed by Customer Agreement available at siriusxm.com. ©2013 Sirius XM Radio Inc. Sirius, XM and all related marks and logos are trademarks of Sirius XM Radio Inc. ⁴Limited availability. HomeLink® is a registered trademark of Johnson Controls Technology Company. Bose® is a registered trademark of The Bose Corporation. iPod® is a registered trademark of Apple, Inc. All rights reserved. iPod not included.

CHOOSE YOUR FABRIC



BEIGE
LEATHER



CHARCOAL
LEATHER



BEIGE
CLOTH



CHARCOAL
CLOTH



SPECIFICATIONS

Engine	2.5	2.5 S	2.5 SV	2.5 SL	3.5 S	3.5 SV	3.5 SL
QR25DE – 2.5-liter DOHC 16-valve 4-cylinder	■	■	■	■			
— Horsepower – 182 hp ¹ @ 6,000 rpm							
— Torque – 180 lb-ft ¹ @ 4,000 rpm							
— Emissions – Tier 2, Bin 5 (Fed); LEV2-SULEV (CA)							
VQ35DE – 3.5-liter DOHC 24-valve V6					■	■	■
— Horsepower – 270 hp @ 6,400 rpm							
— Torque – 251 lb-ft @ 4,400 rpm							
— Emissions – Tier 2, Bin 5 (Fed)							
Continuously Variable Valve Timing Control System (CVTCS)	■	■	■	■	■	■	■
Variable induction system	■	■	■	■	■	■	■
Nissan Direct Ignition System	■	■	■	■	■	■	■
Electronic drive-by-wire throttle	■	■	■	■	■	■	■

Drivetrain	2.5	2.5 S	2.5 SV	2.5 SL	3.5 S	3.5 SV	3.5 SL
Front engine/Front-Wheel Drive	■	■	■	■	■	■	■
Xtronic CVT [®] (Continuously Variable Transmission)	■	■	■	■	■	■	■
Paddle shifters and manual shift mode				■	■	■	■

Brakes	2.5	2.5 S	2.5 SV	2.5 SL	3.5 S	3.5 SV	3.5 SL
11.7" Front vented disc/11.5" rear disc brakes	■	■	■	■	■	■	■
4-wheel Anti-lock Braking System (ABS) with Electronic Brake force Distribution (EBD)	■	■	■	■	■	■	■

Suspension/Steering	2.5	2.5 S	2.5 SV	2.5 SL	3.5 S	3.5 SV	3.5 SL
Independent strut front suspension	■	■	■	■	■	■	■
Multi-link independent rear suspension	■	■	■	■	■	■	■
Front and rear stabilizer bars	■	■	■	■	■	■	■
Active Understeer Control	■	■	■	■	■	■	■
Electronic hydraulic power-assisted steering	■	■	■	■	■	■	■

Wheels/Tires	2.5	2.5 S	2.5 SV	2.5 SL	3.5 S	3.5 SV	3.5 SL
16" x 7.0" steel wheels with wheel covers	■	■					
16" x 7.0" aluminum-alloy wheels		■ ^S					
17" x 7.5" aluminum-alloy wheels			■	■			

■ Standard	■ ^N Part of Navigation Package	■ ^S Part of Sport Value Package
■ ^D Part of Display Audio Package	■ ^M Part of Moonroof Package	
■ ^C Part of Convenience Package	■ ^T Part of Technology Package	

Wheels/Tires (continued)	2.5	2.5 S	2.5 SV	2.5 SL	3.5 S	3.5 SV	3.5 SL
18" x 7.5" aluminum-alloy wheels					■	■	■
P215/60TR16 All-season tires	■	■					
P215/55VR17 All-season tires			■	■			
P235/45VR18 All-season tires					■	■	■

Exterior Features	2.5	2.5 S	2.5 SV	2.5 SL	3.5 S	3.5 SV	3.5 SL
Smart Auto Headlights		■	■	■	■	■	■
Projector-type halogen headlights	■	■	■	■	■	■	■
High Intensity Discharge (HID) xenon headlights							■
Fog lights			■ ^C	■		■	■
LED taillights				■			■
Rear decklid spoiler		■ ^S					
Dual chrome exhaust finishers	■	■	■	■	■	■	■
Dual body-color power outside mirrors	■	■	■		■		■
Manual folding outside mirrors with LED turn signal indicators			■ ^C	■		■	■
Heated outside mirrors				■			■
Power sliding glass moonroof with one-touch open/close and tilt feature			■ ^C	■ ^M		■	■
UV-reducing solar glass	■	■	■	■	■	■	■

Comfort/Convenience	2.5	2.5 S	2.5 SV	2.5 SL	3.5 S	3.5 SV	3.5 SL
Advanced Drive-Assist [®] Display	■	■	■	■	■	■	■
Nissan Navigation System with 7" color touch-screen monitor and voice recognition			■ ^N ■ ^T	■ ^T		■ ^N ■ ^T	■ ^T
SiriusXM Traffic and Travel Link ²			■ ^N ■ ^T	■ ^T		■ ^N ■ ^T	■ ^T
NissanConnect SM Apps		■ ^D	■	■	■	■	■
RearView Monitor		■ ^D	■	■	■	■	■
Hands-free text messaging assistant		■ ^D	■	■	■	■	■
Bluetooth [®] Hands-free Phone System ³	■	■	■	■	■	■	■
HomeLink [®] Universal Transceiver			■ ^C	■		■	■
Air conditioning	■	■			■		
Dual Zone Automatic Temperature Control (ATC)			■	■	■	■	■
In-cabin microfilter			■	■	■	■	■
Rear passenger air conditioning vents			■ ^C	■		■	■
Power windows with one-touch driver-side auto-up/down with auto-reverse	■	■	■	■	■	■	■
Passenger-side front-window one-touch auto-up/down with auto-reverse			■ ^C	■		■	■

Comfort/Convenience (continued)	2.5	2.5 S	2.5 SV	2.5 SL	3.5 S	3.5 SV	3.5 SL
Power door locks with auto-locking feature	■	■	■	■	■	■	■
Remote keyless entry	■						
Nissan Intelligent Key [®]		■	■	■	■	■	■
Push Button Ignition	■	■	■	■	■	■	■
Remote trunk release	■						
Remote Engine Start System		■ ^S	■	■		■	■
Cruise control with steering wheel-mounted controls		■	■	■	■	■	■
Fine Vision electroluminescent gauges	■	■	■	■	■	■	■
Tilt and telescoping steering column	■	■	■	■	■	■	■
Variable intermittent speed-sensitive flat-blade windshield wipers	■	■	■	■	■	■	■
Sun visors with vanity mirrors	■						
Sun visors with illuminated vanity mirrors and extensions		■	■	■	■	■	■
Auto-dimming inside rearview mirror with digital compass			■ ^C	■		■	■
LED map lights and rear reading lights	■	■	■	■	■	■	■
Mood lighting			■ ^C	■		■	■
Overhead sunglasses holder	■	■	■	■	■	■	■
Lockable glove compartment	■	■	■	■	■	■	■
Dual-level center console	■	■	■	■	■	■	■
Four cup holders	■	■	■	■	■	■	■
Front/rear door map pockets with bottle holders	■	■	■	■	■	■	■
Driver seatback pocket							
Front-passenger seatback pocket	■	■	■	■	■	■	■
Height-adjustable 3-point front seat belts	■	■	■	■	■	■	■
12-volt DC power outlets (two)	■	■	■	■	■	■	■
Side cargo net			■ ^C	■		■	■

Seating/Appointments	2.5	2.5 S	2.5 SV	2.5 SL	3.5 S	3.5 SV	3.5 SL
6-way manual adjustable driver's seat	■						
6-way power adjustable driver's seat		■	■		■	■	
8-way power adjustable driver's seat				■			■
Driver's seat power adjustable lumbar support				■			■
Cloth seat trim	■	■	■		■	■	
Leather-appointed seats				■			■
Adjustable rear head restraints				■			■
Heated front seats				■			■

¹CA emissions (SULEV) equipment causes nominal reductions in horsepower (from 182 hp to 179 hp) and torque (from 180 lb-ft to 177 lb-ft). SULEV vehicles are available in California and some northeastern states. ²Required SiriusXM Satellite Radio, NavTraffic and NavWeather subscriptions sold separately after trial period. Installation costs, one-time activation fee, other fees and taxes will apply. NavTraffic available in select markets. Services available only to those 18 or older in the 48 contiguous states and D.C. Fees and programming subject to change. Subscriptions governed by Customer Agreement available at siriusxm.com. ©2013 Sirius XM Radio Inc. Sirius, XM and all related marks and logos are trademarks of Sirius XM Radio Inc. ³Availability of specific features is dependent upon the phone's Bluetooth[®] support. Please refer to your phone Owner's Manual for details. The Bluetooth word mark and logos are owned by Bluetooth SIG, Inc., and any use of such marks by Nissan is under license. ⁴Late availability. Bose[®] is a registered trademark of The Bose Corporation. HomeLink[®] is a registered trademark of Johnson Controls Technology Company. iPod[®] is a registered trademark of Apple, Inc. All rights reserved. iPod not included.

SPECIFICATIONS (CONTINUED)

Seating/Appointments (continued)	2.5	2.5 S	2.5 SV	2.5 SL	3.5 S	3.5 SV	3.5 SL
Heated steering wheel				■			■
Leather-wrapped steering wheel			■	■		■	■
Leather-wrapped shift knob				■			■
Piano black trim	■	■	■		■	■	
Wood-tone trim (Beige Leather interior only)				■			■
Metallic-tone trim (Charcoal Leather interior only)				■			■
60/40 Split fold-down rear seatbacks	■	■	■	■	■	■	■
Carpeted trunk lid trim		■	■	■	■	■	■

Audio/Entertainment

AM/FM/CD audio system	■	■					
AM/FM/CD audio system with 5" color display		D	■		■	■	
Bose® Premium Audio System with AM/FM/CD and 5" color display				■			■
Illuminated steering wheel-mounted audio controls	■	■	■	■	■	■	■
Four speakers	■						
Six speakers		■	■		■	■	
Nine speakers				■			■
Radio Data System (RDS)	■	■	■	■	■	■	■
Speed-sensitive volume control		D	■	■	■	■	■
Auxiliary audio input jack	■	■	■	■	■	■	■
USB connection port for iPod® interface and other compatible devices		D	■	■	■	■	■
MP3/WMA CD playback capability	■	■	■	■	■	■	■
SiriusXM Satellite Radio ²		D	■	■	■	■	■
Streaming audio via Bluetooth® wireless technology	■	■	■	■	■	■	■
Diversity antenna		D	■	■	■	■	■

Safety/Security

Nissan Advanced Air Bag System with dual-stage supplemental front air bags with seat belt and occupant-classification sensors	■	■	■	■	■	■	■
Driver and front-passenger seat-mounted side-impact supplemental air bags	■	■	■	■	■	■	■
Roof-mounted curtain side-impact supplemental air bags for front and rear-seat outboard occupant head protection	■	■	■	■	■	■	■
Vehicle Dynamic Control (VDC) with Traction Control System (TCS)	■	■			■	■	■
Blind Spot Warning (BSW)			T	T		T	T
Moving Object Detection (MOD)			T	T		T	T

Safety/Security (continued)

	2.5	2.5 S	2.5 SV	2.5 SL	3.5 S	3.5 SV	3.5 SL
Lane Departure Warning (LDW)			T	T		T	T
3-point ALR/ELR passenger seat belt system (ELR for driver)	■	■	■	■	■	■	■
Front seat belts with pretensioners and load limiters	■	■	■	■	■	■	■
LATCH System (Lower Anchors and Tethers for CHildren)	■	■	■	■	■	■	■
Zone Body construction with front and rear crumple zones	■	■	■	■	■	■	■
Hood-buckling creases, pipe-style steel side-door guard beams, and energy-absorbing steering column	■	■	■	■	■	■	■
Tire Pressure Monitoring System (TPMS) with Easy-Fill Tire Alert	■						
Tire Pressure Monitoring System (TPMS) with individual tire pressure display and Easy-Fill Tire Alert		■	■	■	■	■	■
Nissan Vehicle Immobilizer System	■	■	■	■	■	■	■
Vehicle Security System	■	■	■	■	■	■	■

PACKAGES

S Sport Value Package (2.5 S)

- 16" x 7.0" aluminum-alloy wheels
- Remote Engine Start System
- Rear decklid spoiler
- Late availability.

D Display Audio Package (2.5 S)

- AM/FM/CD audio system with 5" color display
- RearView Monitor
- NissanConnectSM Apps
- Hands-free text messaging assistant
- USB connection port for iPod® interface and other compatible devices
- SiriusXM Satellite Radio²
- Diversity antenna
- Speed-sensitive volume control
- Late availability.

PACKAGES (CONTINUED)

C Convenience Package (2.5 SV)

- Power sliding glass moonroof with one-touch open/close and tilt feature
- Fog lights
- Manual folding outside mirrors with LED turn signal indicators
- Rear passenger air conditioning vents
- Passenger-side front-window one-touch auto-up/down with auto-reverse
- Auto-dimming inside rearview mirror with digital compass
- HomeLink® Universal Transceiver
- Mood lighting
- Side cargo net

N Navigation Package (2.5 SV, 3.5 SV)

- Nissan Navigation System with 7" color touch-screen monitor and voice recognition
- SiriusXM Traffic and Travel Link²
- This package requires Convenience Package on 2.5 SV. In-mirror digital compass deleted with this package. Limited availability.

M Moonroof Package (2.5 SL)

- Power sliding glass moonroof with one-touch open/close and tilt feature

T Technology Package (2.5 SV, 3.5 SV, 2.5 SL, 3.5 SL)

- Nissan Navigation System with 7" color touch-screen monitor and voice recognition
- SiriusXM Traffic and Travel Link²
- Blind Spot Warning (BSW)
- Moving Object Detection (MOD)
- Lane Departure Warning (LDW)
- This package requires Convenience Package on 2.5 SV models and Moonroof Package on 2.5 SL models. In-mirror digital compass deleted with this package. Late availability on 2.5 SV and 3.5 SV models.

DIMENSIONS/CAPACITIES/WEIGHTS/MPG

Dimensions

Exterior – inches	
Wheelbase	109.3
Overall length	191.5
Overall width	72.0
Overall height	
16"/17" Wheels	57.9
18" Wheels	58.1

Aerodynamics – cd	
Drag coefficient	0.29 (measured on 2.5 S)

Interior – inches (front/rear)	
Head room without moonroof	40.0/37.1
With moonroof	39.1/37.1
Leg room	45.0/36.1
Hip room	54.0/52.1
Shoulder room	56.4/56.4

Capacities

Seating capacity	5
Interior passenger volume (cu. ft.)	
Without moonroof	101.9
With moonroof	100.5
Cargo volume (cu. ft.)	15.4
Fuel tank (gals.)	18.0

Curb Weights – Lbs.

4-cylinder	2.5	2.5 S	2.5 SV	2.5 SL
Base total	3,182	3,193	3,206	3,230
V6		3.5 S	3.5 SV	3.5 SL
Base total		3,363	3,394	3,422

2014 EPA Fuel Economy Estimates

	4-cylinder	V6
City MPG	27	22
Highway MPG	38	31
Combined MPG	31	25

Actual mileage may vary with driving conditions – use for comparison only.

BUYING/OWNING



Nissan Motor Acceptance Corporation. Whether you're buying or leasing, you'll find attractive rates and flexible terms to make your purchase more accessible.

College Grad Program. Ask about our special new vehicle pricing available to individuals up to two years after graduation.

Active and Reserve US Military Program. Ask about our fixed discount on new vehicle pricing available to those serving our country.

New Vehicle Limited Warranties. Protection for your new Nissan includes 3-year/36,000-mile (whichever occurs first) basic coverage and 5-year/60,000-mile (whichever occurs first) powertrain coverage. Terms, conditions and exclusions apply. See Warranty Information Booklet for complete details.

Security+Plus* For additional peace of mind, a variety of extended service plans lets you tailor the coverage to your driving habits.

Maintenance+Plus* This extended plan ensures your Nissan will receive up to 17 different services and over 33 different inspection items at each visit, using the most up-to-date diagnostic equipment available.

Genuine Nissan Parts. When it comes time for service, any necessary replacement parts will be made using Genuine Nissan new or remanufactured parts, or Nissan-approved parts. And they're the only parts to carry Nissan's factory-backed limited warranty.

Nissan Mobility Assist. This program offers reimbursements toward the purchase and installation of certain mobility assistance products for program-eligible Nissans. Go to NissanUSA.com/mobility for more info.

Nissan's environmental action plan focuses on several key areas. Increasing production of Zero Emission vehicles, including the 100% electric LEAF.* Improving fuel efficiency through our PUREDRIVE™ measures. And reducing the environmental impact of manufacturing, as seen at our new, energy-efficient, low-emissions paint plant in Tennessee. For more information, log on to NissanUSA.com/green



At NissanUSA.com, you'll find virtual product demonstrations, a way to "build your own Nissan," a dealer locator, and more information about key Nissan support services. Or if you'd prefer, call **1-800-NISSAN-3** for answers to specific questions about Altima® Sedan or any other Nissan vehicle. The Nissan names, logos, product names, feature names, and slogans are trademarks owned by or licensed to Nissan Motor Co. Ltd. and/or its North American subsidiaries. **Always wear your seat belt, and please don't drink and drive.** ©2013 Nissan North America, Inc.

This brochure is intended for general descriptive and informational purposes only. It is subject to change and does not constitute an offer, representation or warranty (express or implied) by Nissan North America, Inc. Interested parties should confirm the accuracy of any information in this brochure as it relates to a vehicle directly with Nissan North America, Inc., before relying on it to make a purchase decision. Nissan North America, Inc., reserves the right to make changes, at any time, without prior notice, in prices, colors, materials, equipment, specifications, and models and to discontinue models or equipment. Due to continuous product development and other pre- and post-production factors, actual vehicle, materials and specifications may vary from this brochure. Some vehicles shown with optional equipment. See the actual vehicle for complete accuracy. Availability and delivery times for particular models or equipment may vary. Specifications, options and accessories may differ in Hawaii, U.S. territories and other countries. For additional information on availability, options or accessories, see your Nissan dealer or contact Nissan North America, Inc.

Sign up for the latest news and updates on the 2014 Nissan Altima® Sedan.

or visit NissanUSA.com/altima

Los folletos de Nissan también están disponibles en español.

Para descargar el PDF, visita:

NissanUSA.com/folletos-espanol

And follow Nissan on: